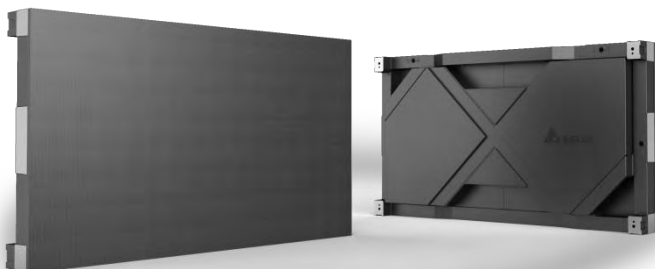




Fine Pitch LED Display System

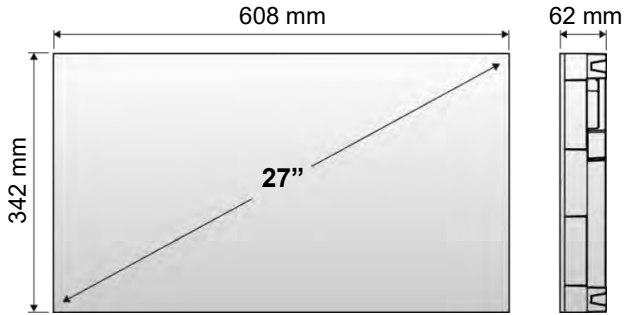
FE-Series

- Fine Image – Leading technology of high gray level for detailed image gradation
- Superior visuals – Wide color gamut coverage for vivid image presentation
- Brilliant design – Die-casting aluminum design with 16:9 aspect ratio to present high definition image
- Great Versatility – Front or rear serviceable module option to fit in with the available space
- Long lifespan – 100,000hrs service life with 24/7 operation



FE-Series

Delta FE series using good circuit design techniques to achieve a wide range of colors, excellent color uniformity and high gray level for detailed image gradation. The superior gray level performance can present all detail even in viewing lower light level content. The unique design of de-ghost circuit can also prevent LED damaged by reverse bias. Die-cast aluminum design and the use of CNC precision machining make the flatness of the screen to be perfect and optimize for 16:9 aspect ratio. FE Series LED video wall displays easily scale for existing Full HD content and sources.



Specifications

| Product Name | | FE-12 | FE-15 | FE-19 | FE-25 |
|--|------------------|---|-------------|-------------|-------------|
| Pixel Pitch (mm) | | 1.26 | 1.58 | 1.9 | 2.53 |
| LED Type (black or white SMD/TH) | | Black SMD | | | |
| Pixel Configuration | | SMD 3-IN-1 | | | |
| Pixel Density (pixels/m ²) | | 623,269 | 398,892 | 277,008 | 156,971 |
| Brightness (cd/m ²) | Native (max) | 800~900 | 900~1,000 | | |
| | Calibrated | 500~600 | 700~800 | | |
| Dimming Capability | | 0~255 level | | | |
| Contrast Ratio | | ≥3,000 : 1 | | | |
| Refresh Rate | | 2,160Hz | 3,120 Hz | | |
| Gray Scale | | 13 bit | 15 bit | 13 bit | 15 bit |
| Colors | | 549 billion | 35 trillion | 549 billion | 35 trillion |
| Viewing Angle | Horizontal | 160° (+/-80°) | | | |
| | Vertical | 160° (+/-80°) | | | |
| Lifetime | | 100,000 hrs | | | |
| Power Input | | AC 100~240V, 47~63 Hz | | | |
| Power Consumption (Calibrated) | Max. (W/cabinet) | 140 | 180 | 170 | |
| | Avg. (W/cabinet) | 47 | 60 | 57 | |
| Cabinet Size (W x H x D) | | 608 x 342 x 62 mm (23.94 x 13.46 x 2.44 inch) | | | |
| Weight (Kg/cabinet) | | 7.9 +/-1 | | | |
| Temperature | Operating | -10°~40°C (14°~104°F) | | | |
| | Storage | -20°~60°C (-4°~140°F) | | | |
| Relative Humidity | Operating | 10%~90% | | | |
| | Storage | 10%~90% | | | |
| Service Access | | Front * | | | |
| IP Grade | | Front IP40 / Rear IP20 | | | |
| Certification | | UL,CB,CE,FCC,CCC | | | |

Ver: 133C833

* Rear access is available.

※ All specifications are subject to change without prior notice.